

Panel Product Range



Click on a **better solution**

The Complete Panel Solution

IMO's range of Panel products continues to deliver innovation and efficiency worldwide, and is where technology and engineering excellence come together.

IMO's Panel range has been specifically designed to meet the demanding needs of today's panel builders and engineers whose requirements can range from a simple DIN rail terminal through to a complete panel solution.

IMO's products allow panel builders globally to deliver significant advances through greater efficiency, reliability and performance, thereby increasing their competitive advantage and delivering the optimum panel solution.

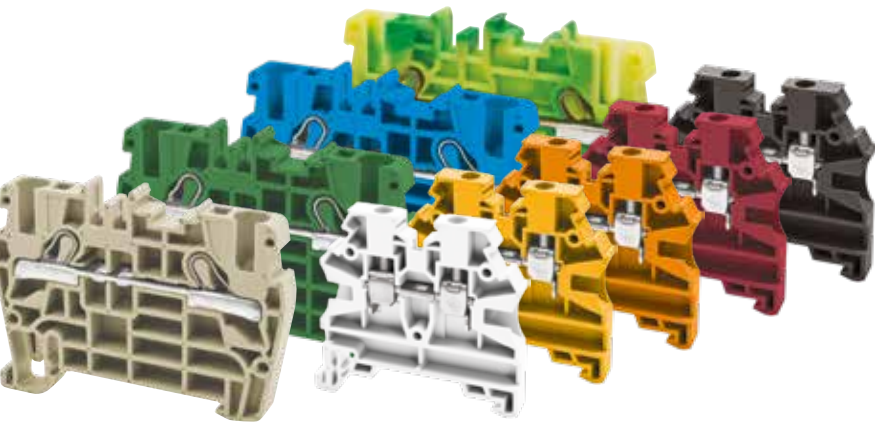
When purchasing from IMO you can be confident that over 40 years experience servicing the Panel Builder market has gone into the design and development of the IMO range.

Listed in this brochure are just some of the most popular products from the IMO Panel range. If you can't find what you are looking for, please contact the IMO Sales Desk on +44 (0)1707 414444. We will be happy to assist you with your enquiry.

Power Supplies



DIN Rail Terminals



Relays & Sockets

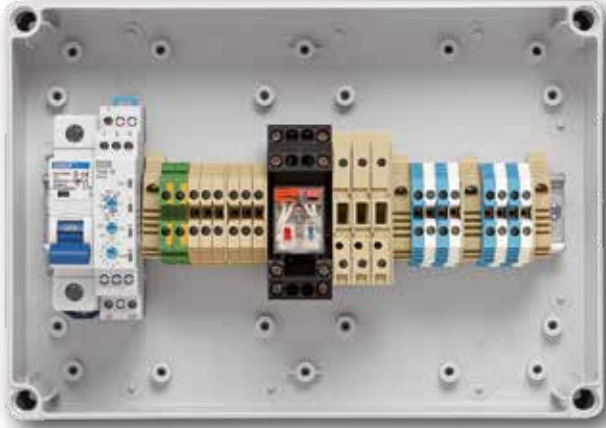


The IMO Panel Product Range

| Pushbuttons | Pilot Lights | Cam Switches | Enclosures | Power Supplies | DIN Rail Timers | Timers |
|---|---|---|---|--|---|---|
|  |  |  |  |  |  |  |

IMO Value Added Assembly Division will help you to:

- Reduce your stock level
- Reduce cost
- Ensure quality
- Increase productivity



Are you looking for a supplier for your assemblies who can offer:

- Access to a wide range of products
- Extended range of DIN terminals and accessories
- Relay and sockets, MCBs, power supplies, timers, contactors, signal interface units.
- Standard or custom marker solutions for DIN terminals
- Flexible packing facilities for individual or volume packing



IMO through its Assembly Division can provide Value Added Assembly solutions built to customer specification whether you are looking for prototypes, one-off projects, or small to large volume requirements with regular deliveries, IMO can offer you a solution.

As a world recognised manufacturer of electrical components, IMO have a wide range of connection, power, control and interface products readily available from stock and are always looking forward to the next challenge.

Your assembly can be as simple as 2 DIN terminals on a small piece of rail, to multiple products on DIN rail lengths up to 2m; and if required IMO have a range of standard enclosures which are available to accommodate your units, or we can design a custom solution with you.

Challenge us and tell us about your assembly needs and see what solution we can propose.

To save time and money call us today with your drawings, photos and specifications.

| Enclosed Starters | Contactors | Isolators | Motor Protection Circuit Breakers | Miniature Circuit Breakers | DIN Rail Terminals | Relays & Sockets |
|-------------------|------------|-----------|-----------------------------------|----------------------------|--------------------|------------------|
| | | | | | | |

Push Buttons & Pilot Lights



- IP67/IP65 Protection
- Opaque or Illuminated
- Aluminium, Black or Chrome Bezel
- Snap-On Contact Blocks
- Colour Coded Contacts
- International Approvals Including UL Approved Products
- Maintained or Spring Return
- Assembled Control Stations
- 1/2/3 Hole Push Button Enclosure
- Key Operated Switch
- Labelling Accessories

Emergency Push Buttons

| Part Number | Description |
|--------------|--|
| BS3P3RED-0 | Emergency Push Button 28mm, Red With White "O", Twist To Release, Black Bezel |
| BS3P45RED | Emergency Push Button 38mm, Red, Pull To Release |
| BS3P44S3 | Emergency Push Button 40mm, Red Key Release |
| BC3P34RED-0 | Emergency Push Button 40mm, Red With White "O", Twist To Release, Chrome Bezel |
| BS3P34RED-0 | Emergency Push Button 40mm, Red With White "O", Twist To Release, Black Bezel |
| BS3P44RED | Emergency Push Button 30mm, Red, Pull To Release |
| B3-SK-YELLOW | Emergency Shroud for 40mm Max Diameter Button |
| BG10P45-11 | Emergency Stop Station 40mm Red Button, Yellow Face, Pull To Release, 1N/O And 1N/C Contacts |
| BG10P34P-02 | Emergency Stop Station 70mm Twist To Release Red Button, Yellow Enclosure Face, 2N/C Contacts |
| BG10P34P-11 | Emergency Stop Station 70mm Twist To Release Red Button, Yellow Enclosure Face, 1N/O + 1N/C Contacts |



Push Buttons / Rotary Knobs

| Part Number | Description |
|---------------|--|
| BS3P14RED-0 | Mushroom Head Push Button 40mm, Red With White "O" |
| BS3DBLA-ARROW | Push Button Spring Return Black With White Arrow Black Bezel |
| B3DBLACK | Push Button Spring Return Black, Aluminium Bezel |
| BS3DBLACK | Push Button Spring Return Black, Black Bezel |
| B3DBLUE | Push Button Spring Return Blue, Aluminium Bezel |
| BS3DBLUE | Push Button Spring Return Blue, Black Bezel |
| BS3DGRE-I | Push Button Spring Return Green With White "I" Black Bezel |
| BS3DGREEN | Push Button Spring Return Green, Black Bezel |
| BS3DRED | Push Button Spring Return Red, Black Bezel |
| B3DRED | Push Button Spring Return Red, Aluminium Bezel |
| B3P1RED | Push Button Spring Return 28mm Red, Aluminium Bezel |
| BS3DYELLOW | Push Button Spring Return Yellow, Black Bezel |
| B3KN2 | Rotary Knob, 2 Position Maintained 60deg, Aluminium Bezel |
| BC3KN2 | Rotary Knob, 2 Position Maintained 60deg, Chrome Bezel |
| BS3KN2 | Rotary Knob, 2 Position Maintained 60deg, Black Bezel |
| B3KN3 | Rotary Knob, 3 Position Maintained 60deg, Aluminium Bezel |
| BS3KN3 | Rotary Knob, 3 Position Maintained 60deg, Black Bezel |
| BS3KN9 | Rotary Knob, 2 Position Maintained 120deg, Black Bezel |
| BS3KN10 | Rotary Knob, 2 Position Maintained 90deg, Black Bezel |

Illuminated Push Buttons

| Part Number | Description |
|---------------|---|
| B3DLRED | Illuminated Push Button Spring Return Red, Aluminium Bezel |
| B3DLGREEN | Illuminated Push Button Spring Return Green, Aluminium Bezel |
| B3DLYELLOW | Illuminated Push Button Spring Return Yellow, Aluminium Bezel |
| B3DLBLUE | Illuminated Push Button Spring Return Blue, Aluminium Bezel |
| BS3KL2 | Illuminated Rotary Knob 2 Position Maintained, Black Bezel |
| BS3DT-GRE/RED | Double Actuation Push Button Green - Red, Black Bezel |
| BC3DT-GRE/RED | Double Actuation Push Button Green - Red, Chrome Bezel |
| B3DT-GRE/RED | Double Actuation Push Button Green - Aluminium Bezel |

Transparent Lens Caps

| Part Number | Description |
|-------------|-------------------------------|
| B3RFGREEN | Lens Cap, Green |
| B3RFRED | Lens Cap, Red |
| B3RGREEN | Lens Cap, Green, Fresnel Lens |
| B3RRRED | Lens Cap, Red, Fresnel Lens |



Contact Blocks



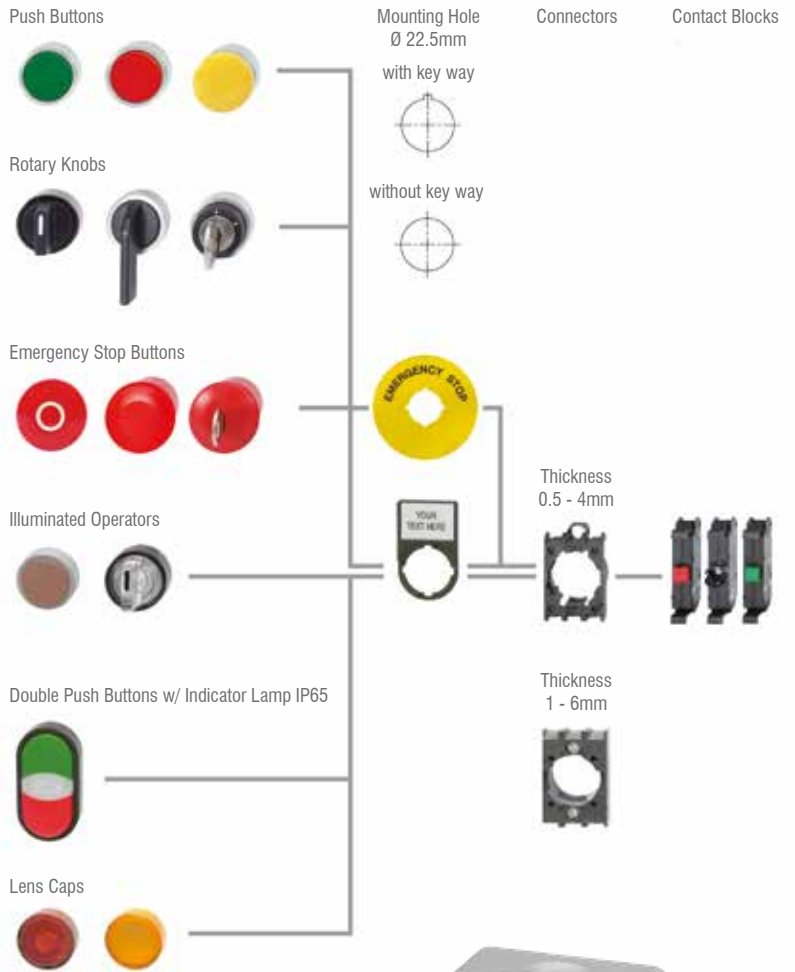
| Part Number | Description |
|-------------|---|
| B3T01 | 1N/C Clips Onto B3S/B3M |
| B3T10 | 1N/O Clips Onto B3S/B3M |
| B4TU11 | 1N/O And 1N/C, for BG... Enclosures |
| B4TU10F | 1N/O With Lamp Holder, for BG... Enclosures |
| B4TU10 | 1N/O, for BG... Enclosures |
| B4TU02 | 2N/C, for BG... Enclosures |
| B4TU20 | 2N/O, for BG... Enclosures |
| BG1 | Pushbutton Enclosure 1 Hole Grey |
| BG1YEL | Pushbutton Enclosure 1 Hole Yellow |
| BG2 | Pushbutton Enclosure 2 Hole Grey |
| BG3 | Pushbutton Enclosure 3 Hole Grey |
| J7049 | Pushbutton Collar tightening tool |

LED Pilot Lights



| Part Number | Description |
|----------------|----------------------------------|
| LMB-110-GREEN | LED Pilot Light 110VAC Green |
| LMB-110-RED | LED Pilot Light 110VAC Red |
| LMB-110-WHITE | LED Pilot Light 110VAC White |
| LMB-110-YELLOW | LED Pilot Light 110VAC Yellow |
| LMB-230-GREEN | LED Pilot Light 230VAC Green |
| LMB-230-RED | LED Pilot Light 230VAC Red |
| LMB-230-WHITE | LED Pilot Light 230VAC White |
| LMB-230-YELLOW | LED Pilot Light 230VAC Yellow |
| LMB-24-BLUE | LED Pilot Light 24V AC/DC Blue |
| LMB-24-GREEN | LED Pilot Light 24V AC/DC Green |
| LMB-24-RED | LED Pilot Light 24V AC/DC Red |
| LMB-24-WHITE | LED Pilot Light 24V AC/DC White |
| LMB-24-YELLOW | LED Pilot Light 24V AC/DC Yellow |

Quick Chart Selection



This is just a selection from our range.
For the entire range, please go to
www.imopc.com

| B3RF.. | B3P34RED-0 | BS3P44RED | BS3P44S3 | B3DL.. | B3-SK-YELLOW | BG1 | B4TU11.. Contact Block |
|--------|------------|-----------|----------|--------|--------------|-----|---------------------------|
| | | | | | | | |

Cam Switches



IMO's range of Cam Switches incorporates a unique building block system that allows for any number of switch variants to be built and supplied to the customer. Such is the flexibility of the Cam Switches, that they can be utilised in countless applications including mains/motor switching and control and instrumentation circuits.

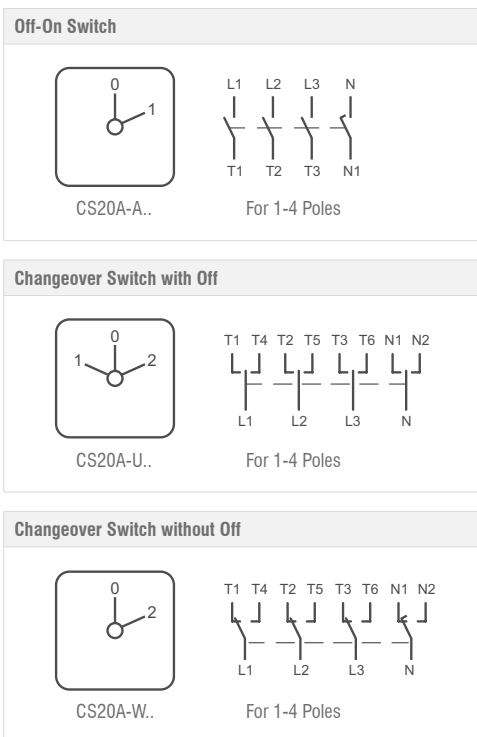
The standard contact rating is 20A, although higher ratings are available on request and these switches have double interruption per pole and two contacts per cell. Standard units incorporate a 22.5mm central fixing for panel mounting. The switch body and actuators are supplied separately to provide a choice of four different set up configurations. Connection from actuator to switch body is made through a solid aluminium shaft.

Manufactured in accordance with IEC 60947-3, the new Cam Switches carry an IP65 rating appropriately when mounted in a suitably rated enclosure and have 'finger proof' screw terminals. The switch body is supplied complete with legend plate and all units are UL/cUL approved.



| Part Number | Description |
|-------------|---|
| CS20A-A1 | 1 Pole 2 Position 20A, On/Off With Legend Plate |
| CS20A-A2 | 2 Pole 2 Position 20A, On/Off With Legend Plate |
| CS20A-A4 | 4 Pole 2 Position 20A, On/Off With Legend Plate |
| CS20A-A8 | 8 Pole 2 Position 20A, On/Off With Legend Plate |
| CS20A-ST31 | 1 Pole 3 Position 20A, Step With Legend Plate |
| CS20A-ST33 | 3 Pole 3 Position 20A, Step With Legend Plate |
| CS20A-ST42 | 2 Pole 4 Position 20A, Step With Legend Plate |
| CS20A-ST45 | 5 Pole 4 Position 20A, Step With Legend Plate |
| CS20A-ST51 | 1 Pole 5 Position 20A, Step With Legend Plate |
| CS20A-ST52 | 2 Pole 5 Position 20A, Step With Legend Plate |
| CS20A-ST61 | 1 Pole 6 Position 20A, Step With Legend Plate |
| CS20A-U1 | 1 Pole 3 Position 20A, Changeover With Legend Plate |
| CS20A-U2 | 2 Pole 3 Position 20A, Changeover With Legend Plate |
| CS20A-U3 | 3 Pole 3 Position 20A, Changeover With Legend Plate |
| CS20A-U4 | 4 Pole 3 Position 20A, Changeover With Legend Plate |
| CS20A-U6 | 6 Pole 3 Position 20A, Changeover With Legend Plate |
| CS20A-W1 | 1 Pole 2 Position 20A, Changeover Without Off With Legend Plate |
| CS20A-W2 | 2 Pole 2 Position 20A, Changeover Without Off With Legend Plate |
| CS20A-W3 | 3 Pole 2 Position 20A, Changeover Without Off With Legend Plate |
| CS20A-W4 | 4 Pole 2 Position 20A, Changeover Without Off With Legend Plate |
| CS20A-W8 | 8 Pole 2 Position 20A, Changeover Without Off With Legend Plate |
| RB2 | Cam Switch Handle, Round Bezel Lever |
| RBK2 | Cam Switch Handle, Round Bezel, Key Operated |
| SP2 | Cam Switch Handle, Escutcheon Plate Lever |
| SPK2 | Cam Switch Handle, Escutcheon Plate, Key Operated |

NOTE: Cam switches are supplied without handle or legend plate holder. See below for handle options.



| Complete Switches | | Handles | | | |
|-------------------|----------------|---------|------|-----|------|
| CS20A-U1 & SP2 | CS20A-U1 & RB2 | RB2 | RBK2 | SP2 | SPK2 |
| | | | | | |

Enclosures



- ABS / Polycarbonate Body
- Plain Sided Walls
- Colour RAL 7035 – Light Grey
- Circuit Board Slots in Base
- IP67 / IP66
- Plastic Screws Captive Once Fitted
- Pre-Moulded Fixing Points in Base
- Suitable for Housing Electronic Terminal Blocks, Electro-Mechanical Components & Industrial Equipment
- Polycarbonate Versions (144EP Range) are UL & cUL Approved



ABS / Polycarbonate Enclosures

| Part Number | Description |
|-------------|--|
| 144E0001 | Enclosure, ABS (75 X 125 X 75) |
| 144E0002 | Enclosure, ABS (125 X 125 X 75) |
| 144E0003 | Enclosure, ABS (125 X 125 X 100) |
| 144E0004 | Enclosure, ABS (125 X 175 X 75) |
| 144E0005 | Enclosure, ABS (125 X 175 X 100) |
| 144E0006 | Enclosure, ABS (125 X 175 X 125) |
| 144E0007 | Enclosure, ABS (175 X 175 X 100) |
| 144E0008 | Enclosure, ABS (175 X 175 X 125) |
| 144E0009 | Enclosure, ABS (175 X 175 X 150) |
| 144E0010 | Enclosure, ABS (175 X 250 X 100) |
| 144E0011 | Enclosure, ABS (175 X 250 X 150) |
| 144E1008 | Enclosure, ABS (120 X 200 X 86) |
| 144E1010 | Enclosure, ABS (230 X 300 X 111) |
| 144E2002 | Transparent Lid Enclosure, ABS (125 X 125 X 75) |
| 144E2003 | Transparent Lid Enclosure, ABS (125 X 175 X 100) |
| 144E2004 | Transparent Lid Enclosure, ABS (125 X 175 X 150) |
| 144EP0002 | Enclosure, Polycarbonate (125 X 125 X 75) |
| 144EP0004 | Enclosure, Polycarbonate (125 X 175 X 75) |
| 144EP0005 | Enclosure, Polycarbonate (125 X 175 X 100) |
| 144EP0006 | Enclosure, Polycarbonate (125 X 175 X 125) |
| 144EP0008 | Enclosure, Polycarbonate (175 X 175 X 125) |
| 144EP0010 | Enclosure, Polycarbonate (175 X 250 X 100) |
| 144EP0011 | Enclosure, Polycarbonate (175 X 250 X 150) |

Distribution Boxes

| Part Number | Description |
|-------------|---|
| E-04W | 4 Way IP65 Enclosure, 127x200x120, Transparent Door |
| E-08W | 8 Way IP65 Enclosure, 200x200x120, Transparent Door |
| E-12W | 12Way IP65 Enclosure 318x258x142, Transparent Door |
| E-24W | 24Way IP65 Enclosure 318x383x142, Transparent Door |
| E-36W | 36Way IP65 Enclosure 507x383x142, Transparent Door |

Accessories

| Part Number | Description |
|-------------|--|
| 144A0001 | Hinge Pair |
| 144A0002 | Fastening lug, 4 off |
| 144A0003 | Inspection window 2 mod. |
| 144A0004 | Inspection window 4 mod. |
| 144A0005 | Inspection window 6 mod. |
| 144A0006 | Inspection window 8 mod. |
| 144A0007 | Inspection window 10 mod. |
| 144A0008 | Inspection window 12 mod. |
| 144A0009 | Vent device IP34 |
| 144A0010 | Vent device IP44 |
| 144R0001 | DIN Rail For 144E0001 |
| 144R0002 | DIN Rail For 144E0002, 0003 |
| 144R0004 | DIN Rail For 144E0004, 0005, 0006, 0007, 0008 & 0009 |
| 144R0010 | DIN Rail For 144E0010, 0011 |
| E-Lock | Enclosure Lock To Suit E-xxW Enclosures |



Power Supplies



IMOs range of industrial Power Supplies have all been designed especially for the control and automation marketplace. Offering the benefits of slim lines, universal input, and the security of IMOs 3-year warranty, the three ranges of PSU provide multiple choices for low power electrical or electronic systems commonly used in automation applications.

All IMO Power Supplies are UL approved and offer high efficiency, making them an exceptionally reliable power source for components such as sensors, relays, contactors, timers, temperature controllers, PLCs, process controllers and HMIs, all of which are available from IMO.

- Single & Three Phase Versions
- Universal Input
- AC/DC Operation
- High Efficiency up to 93%
- Class 2 Types
- Up to 960W
- Plastic & Metal Enclosures
- Short Circuit Protection
- DIN Rail Mountable



DPS-1 Single Phase

| Part Number | Description |
|----------------|---|
| DPS-1-015-5DC | 90-264VAC Input, 5VDC Output, 15W 3A, Plastic Body |
| DPS-1-018-12DC | 90-264VAC Input, 12VDC Output, 18W 1.5A, Plastic Body |
| DPS-1-018-24DC | 90-264VAC Input, 24VDC Output, 18W 0.75A, Plastic Body |
| DPS-1-030-5DC | 85-264VAC Input, 5VDC Output, 30W 6A, Plastic Body |
| DPS-1-030-12DC | 85-264VAC Input, 12VDC Output, 30W 2.5A, Plastic Body |
| DPS-1-030-24DC | 85-264VAC Input, 24VDC Output, 30W 1.25A, Plastic Body |
| DPS-1-030-48DC | 85-264VAC Input, 48VDC Output, 30W 0.625A, Plastic Body |
| DPS-1-050-5DC | 85-264VAC Input, 5VDC Output, 50W 10A, Plastic Body |
| DPS-1-060-12DC | 85-264VAC Input, 12VDC Output, 60W 5A, Plastic Body |
| DPS-1-060-24DC | 85-264VAC Input, 24VDC Output, 60W 2.5A, Plastic Body |
| DPS-1-060-48DC | 85-264VAC Input, 48VDC Output, 60W 1.25A, Plastic Body |
| DPS-1-100-12DC | 115/230VAC Input, 12VDC Output, 100W 8.4A, Plastic Body |
| DPS-1-100-24DC | 115/230VAC Input, 24VDC Output, 100W 4.2A, Plastic Body |
| DPS-1-100-48DC | 115/230VAC Input, 48VDC Output, 100W 2.1A, Plastic Body |

| | |
|----------------|--|
| DPS-1-120-12DC | 115/230VAC Input, 12VDC Output, 120W 10A, Metal Body |
| DPS-1-120-24DC | 115/230VAC Input, 24VDC Output, 120W 5A, Metal Body |
| DPS-1-120-48DC | 115/230VAC Input, 48VDC Output, 120W 2.5A, Metal Body |
| DPS-1-240-24DC | 115/230VAC Input, 24VDC Output, 240W 10A, Metal Body |
| DPS-1-240-48DC | 115/230VAC Input, 48VDC Output, 240W 5A, Metal Body |
| DPS-1-300-24DC | 115/230VAC Input, 24VDC Output, 300W 12.5A, Metal Body |
| DPS-1-300-48DC | 115/230VAC Input, 48VDC Output, 300W 6.25A, Metal Body |
| DPS-1-480-24DC | 115/230VAC Input, 24VDC Output, 480W 20A, Metal Body |
| DPS-1-480-48DC | 115/230VAC Input, 48VDC Output, 480W 10A, Metal Body |

DPS-3 Three Phase

| Part Number | Description |
|----------------|--|
| DPS-3-120-12DC | 340-575VAC Input, 12VDC Output, 120W 10A, Metal Body |
| DPS-3-120-24DC | 340-575VAC Input, 24VDC Output, 120W 5A, Metal Body |
| DPS-3-240-24DC | 340-575VAC Input, 24VDC Output, 240W 10A, Metal Body |
| DPS-3-240-48DC | 340-575VAC Input, 48VDC Output, 240W 5A, Metal Body |
| DPS-3-480-24DC | 340-575VAC Input, 24VDC Output, 480W 20A, Metal Body |
| DPS-3-480-48DC | 340-575VAC Input, 48VDC Output, 480W 20A, Metal Body |
| DPS-3-960-24DC | 340-575VAC Input, 24VDC Output, 960W 40A, Metal Body |
| DPS-3-960-48DC | 340-575VAC Input, 48VDC Output, 960W 20A, Metal Body |





MPS-1 Single Phase Modular

| Part Number | Description |
|----------------|--|
| MPS-1-007-5DC | 90-264VAC Input, 5VDC Output, 7.5W 1.5A, Plastic Body |
| MPS-1-015-5DC | 90-264VAC Input, 5VDC Output, 15W 3A, Plastic Body |
| MPS-1-022-5DC | 90-264VAC Input, 5VDC Output, 22W 4.5A, Plastic Body |
| MPS-1-035-5DC | 90-264VAC Input, 5VDC Output, 35W 7A, Plastic Body |
| MPS-1-060-5DC | 90-264VAC Input, 5VDC Output, 60W 12A, Plastic Body |
| MPS-1-010-12DC | 90-264VAC Input, 12VDC Output, 10W 0.83A, Plastic Body |
| MPS-1-024-12DC | 90-264VAC Input, 12VDC Output, 24W 2A, Plastic Body |
| MPS-1-033-12DC | 90-264VAC Input, 12VDC Output, 33W 2.75A, Plastic Body |
| MPS-1-054-12DC | 90-264VAC Input, 12VDC Output, 54W 4.5A, Plastic Body |
| MPS-1-072-12DC | 90-264VAC Input, 12VDC Output, 72W 6A, Plastic Body |
| MPS-1-010-24DC | 90-264VAC Input, 24VDC Output, 10W 0.42A, Plastic Body |
| MPS-1-024-24DC | 90-264VAC Input, 24VDC Output, 24W 1A, Plastic Body |
| MPS-1-036-24DC | 90-264VAC Input, 24VDC Output, 36W 1.5A, Plastic Body |
| MPS-1-060-24DC | 90-264VAC Input, 24VDC Output, 60W 2.5A, Plastic Body |
| MPS-1-100-24DC | 90-264VAC Input, 24VDC Output, 100W 4.2A, Plastic Body |

BPS-1 Single Phase Slimline

| Part Number | Description |
|----------------|--|
| BPS-1-15-12DC | 90-264VAC 127-370VDC Inputs, 15W 1.2A 12VDC, Plastic Body |
| BPS-1-30-12DC | 90-264VAC 127-370VDC Inputs, 30W 2.5A 12VDC, Plastic Body |
| BPS-1-60-12DC | 90-264VAC 127-370VDC Inputs, 60W 5A 12VDC, Plastic Body |
| BPS-1-100-12DC | 90-264VAC 127-370VDC Inputs, 100W 8.3A 12VDC, Plastic Body |
| BPS-1-15-24DC | 90-264VAC 127-370VDC Inputs, 15W 0.63A 24VDC, Metal Body |
| BPS-1-30-24DC | 90-264VAC 127-370VDC Inputs, 30W 1.3A 24VDC, Metal Body |
| BPS-1-70-24DC | 90-264VAC 127-370VDC Inputs, 70W 3A 24VDC, Metal Body |
| BPS-1-120-24DC | 90-264VAC 127-370VDC Inputs, 120W 5A 24VDC, Metal Body |
| BPS-1-180-24DC | 90-264VAC 127-370VDC Inputs, 180W 7.5A 24VDC, Metal Body |
| BPS-1-240-24DC | 90-264VAC 127-370VDC Inputs, 240W 10A 24VDC, Metal Body |





IMO's comprehensive range of DIN Rail mountable Timers delivers up-to-the-minute technology. Ranging from the simple single-function through to the multi-function timer with display, these timers are being used daily in all types of applications and industries. The ultra compact design and top-mounted terminals make installation easy, even in the tightest of panels, providing customers with a solution at minimal cost. Wide input voltage capability allow these products to be installed in applications across the world.

IMO's range of Panel Mount / Plug-In Timers provide users with a range of settings and functionality and timing ranges between 0.1 sec and 100hrs. Other key features include indication of time range, time up and power on timing. IMO Sockets are available to complement the panel mounting facility thereby giving the installer the option of DIN rail mounting, surface mounting or printed-circuit board mounting.

IMO Timers are always of the highest quality, and are backed with a Three Year Warranty. If you require a timer that is not listed here please contact IMO to receive information on the full range.

- 17.5mm DIN Rail Mount Range
- 48 DIN Panel Mount/Plug-In Range
- Multifunction
- On / Off / True Off Delay
- Asymmetrical
- Star Delta
- 24 -240VAC/DC, 400VAC (TDSD1)
- Wide Input Voltage Range



Panel Mount / Plug-In

| Part Number | Description |
|-----------------|---|
| TA11-A100-230AC | Timer 0.05s-60hr 2C/O Multi/F 5A, 11pin octal, 100-230VAC |
| TA11-A24AC/DC | Timer 0.05s-60hr 2C/O Multi/F 5A, 11pin octal, 24VAC/DC |
| TA8-A100-230AC | Timer 0.05s-60hr 2C/O On-DELAY 5A, 8pin octal, 100-230VAC |
| TA8-A24AC/DC | Timer 0.05s-60hr 2C/O On-DELAY 5A, 8pin octal, 24VAC/DC |
| TA8-DA100-230AC | Timer 0.1m-12m 2C/O True Off-DELAY 5A, 8pin octal, 100-230VAC |
| TA8-SA100-230AC | Timer 0.05s-60hr 1C/O On-DELAY 5A, 8pin octal, 100-230VAC |
| TA8-TA100-230AC | Timer 0.05s-60hr 2C/O Asymmetrical 5A, 8pin octal, 100-230VAC |
| TY4-12DC | 14 Pin Plug-In On Delay Timer, 0.1s-100h, 12VDC 4C/O |
| TY4-24DC | 14 Pin Plug-In On Delay Timer, 0.1s-100h, 24VDC 4C/O |
| TY4-24AC | 14 Pin Plug-In On Delay Timer, 0.1s-100h, 24VAC 4C/O |
| TY4-115AC | 14 Pin Plug-In On Delay Timer, 0.1s-100h, 115VAC 4C/O |
| TY4-230AC | 14 Pin Plug-In On Delay Timer, 0.1s-100h, 230VAC 4C/O |

DIN Rail Mountable

| Part Number | Description |
|-------------|---|
| TDM10 | Multifunction DIN Timer 10 Func, 1C/O, 24-230V AC/DC |
| TDAS | Multifunction Asymmetrical DIN Timer, 1C/O, 24-230V AC/DC |
| TDSD1 | Star/Delta DIN Timer 20-500ms, 2C/O, 230-400VAC |



Istart Enclosed Starters



- Push button stop/start
- IP65 ABS enclosure
- Prewired to accept overload (U12/16E..)



| Part Number | Description |
|-------------|---|
| DOL10110 | DOL Starter 4kW 10A Start and Stop, 110VAC coil |
| DOL10230 | DOL Starter 4kW 10A Start and Stop, 230VAC coil |
| DOL10400 | DOL Starter 4kW 10A Start and Stop, 400VAC coil |
| DOL18110 | DOL Starter 7.5kW 18A Start and Stop, 110VAC coil |
| DOL18230 | DOL Starter 7.5kW 18A Start and Stop, 230VAC coil |
| DOL18400 | DOL Starter 7.5kW 18A Start and Stop, 400VAC coil |

Modular Heating & Lighting Contactors



- Suitable for Control of Lamps, Heating, Air-Conditioning & Motor Control
- 2 or 4 Pole Version
- 20A up to 63A 400V AC1
- Multiple Pole Configuration Available
- Space Saving Design
- Low Switching Noise
- Low Power Consumption
- Coil Voltage 230VAC or 24VAC



| Part Number | Description |
|-------------|----------------------------|
| HC20-20230 | 20A 2 Pole N/O 230VAC coil |
| HC20-02230 | 20A 2 Pole N/C 230VAC coil |
| HC20-2024 | 20A 2 Pole N/O 24VAC coil |
| HC25-20230 | 25A 2 Pole N/O 230VAC coil |
| HC25-40230 | 25A 4 Pole N/O 230VAC coil |

| Part Number | Description |
|-------------|----------------------------|
| HC25-04230 | 25A 4 Pole N/C 230VAC coil |
| HC40-20230 | 40A 2 Pole N/O 230VAC coil |
| HC40-40230 | 40A 4 Pole N/O 230VAC coil |
| HC63-20230 | 63A 2 Pole N/O 230VAC coil |
| HC63-40230 | 63A 4 Pole N/O 230VAC coil |



Contactors 4 - 400kW



- 10A up to 1200A 400V AC3
- Minimum Size & Maximum Performance
- AC & DC Operated
- Ambient Temperature -40°C to +90°C
- DIN Rail Mounting up to 115A AC3
- Bifurcated Aux. Contacts
- High Contact Reliability
- 4 Pole Full Rated Version Available
- Coil Connection Top & Bottom (MC10N to MC22N)



Micro Contactors (MA04, MA05)

| Part Number | Description |
|-----------------|---|
| MA04-S-22230AC | Micro Relay Cont 4P (2N/O+2N/C), 3A AC15, 230VAC coil |
| MA05-S-01110AC | Micro Cont 3P Open 2.2kW 5A AC3, 1N/C Aux. 110VAC coil |
| MA05-S-0124AC | Micro Cont 3P Open 2.2kW 5A AC3, 1N/C Aux. 24VAC coil |
| MA05-S-10110AC | Micro Cont 3P Open 2.2kW 5A AC3, 1N/O Aux. 110VAC coil |
| MA05-S-10230AC | Micro Cont 3P Open 2.2kW 5A AC3, 1N/O Aux. 230VAC coil |
| MA05-S-1024DC | Micro Cont 3P Open 2.2kW 5A AC3, 1N/O Aux. 24VDC coil |
| MA05-R-S-0124AC | Micro Rev Cont 3P Open 2.2kW 5A AC3, 1N/C Aux. 24VAC coil |
| MA05-P-0124AC | Micro Cont PCB 3P Open 2.2kW 5A AC3, 1N/C Aux. 24VAC coil |

Miniature Contactors (MR07, MB09, MB12)

| Part Number | Description |
|--------------|---|
| MR07-S-22230 | Mini Relay 4P (2N/O+2N/C), 3A AC15, 230VAC coil |
| MB09-S-10=24 | Mini Cont 3P Open 4kW 9A AC3, 1N/O Aux, 24VDC coil |
| MB09-S-1048 | Mini Cont 3P Open 4kW 9A AC3, 1N/O Aux, 48VAC coil |
| MB09-S-10110 | Mini Cont 3P Open 4kW 9A AC3, 1N/O Aux, 110VAC coil |
| MB09-S-01230 | Mini Cont 3P Open 4kW 9A AC3, 1N/C Aux, 230VAC coil |
| MB09-S-10230 | Mini Cont 3P Open 4kW 9A AC3, 1N/O Aux, 230VAC coil |
| MB09-P-10=24 | Mini Cont 3P Open 4kW 9A AC3, 1N/C Aux, PCB mount, 24VDC coil |
| MB12-S-10=24 | Mini Cont 3P Open 5.5kW 12A AC3, 1N/O Aux, 24VDC coil |

Standard Contactors (MC10N - MC22N)

| Part Number | Description |
|--------------------|--|
| MC10N-S-1024DC | Contact 3P Open 4kW 10A AC3, 1N/O Aux, 24VDC coil |
| MC10N-S-10110AC | Contact 3P Open 4kW 10A AC3, 1N/O Aux, 110VAC coil |
| MC10N-S-10230AC | Contact 3P Open 4kW 10A AC3, 1N/O Aux, 230VAC coil |
| MC14N-S-1024AC | Contact 3P Open 5.5kW 14A AC3, 1N/O Aux, 24VAC coil |
| MC14N-S-10230AC | Contact 3P Open 5.5kW 14A AC3, 1N/O Aux, 230VAC coil |
| MC14N-S-10400AC | Contact 3P Open 5.5kW 14A AC3, 1N/O Aux, 400VAC coil |
| MC18N-S-1024DC | Contact 3P Open 7.5kW 18A AC3, 1N/O Aux, 24VDC coil |
| MC18N-S-10230AC | Contact 3P Open 7.5kW 18A AC3, 1N/O Aux, 230VAC coil |
| MC22N-S-10110AC | Contact 3P Open 11kW 22A AC3, 1N/O Aux, 110VAC coil |
| MC22N-S-10230AC | Contact 3P Open 11kW 22A AC3, 1N/O Aux, 230VAC coil |
| MC10N-S-00-22110AC | Contact 4P (2N/O+2N/C) 4kW 10A AC3, 110VAC coil |
| MC10N-S-00-31110AC | Contact 4P (3N/O+1N/C) 4kW 10A AC3, 110VAC coil |
| MC10N-S-00-40230AC | Contact 4P Open 4kW 10A AC3, 230VAC coil |
| MC18N-S-00-40110AC | Contact 4P Open 7.5kW 18A AC3, 110VAC coil |

Standard Contactors (MC24 - MC115)

| Part Number | Description |
|---------------|---|
| MC24-S-00110 | Contact 3P Open 11kW 24A AC3, 110VAC coil |
| MC24-S-00230 | Contact 3P Open 11kW 24A AC3, 230VAC coil |
| MC24-S-00=24 | Contact 3P Open 11kW 24A AC3, 24VDC coil |
| MC32-S-00110 | Contact 3P Open 15kW 32A AC3, 110VAC coil |
| MC32-S-00230 | Contact 3P Open 15kW 32A AC3, 230VAC coil |
| MC32-S-0024 | Contact 3P Open 15kW 32A AC3, 24VAC coil |
| MC40-S-00230 | Contact 3P Open 18.5kW 40A AC3, 230VAC coil |
| MC50-S-00400 | Contact 3P Open 22kW 50A AC3, 400VAC coil |
| MC62-S-00110 | Contact 3P Open 30kW 62A AC3, 110VAC coil |
| MC74-S-00230 | Contact 3P Open 37kW 74A AC3, 230VAC coil |
| MC90-S-00230 | Contact 3P Open 45kW 90A AC3, 230VAC/DC coil |
| MC90-S-00110 | Contact 3P Open 45kW 90A AC3, 110VAC/DC coil |
| MC115-S-00230 | Contact 3P Open 55kW 115A AC3, 230VAC/DC coil |



Capacitor Switching Contactors for reactive or non-reactive capacitor banks

| Part Number | Description |
|-----------------|---|
| MC18N-K-10400AC | 12.5kVar Cap. Sw. Contactor 3P, 1N/O Aux. 400VAC coil |
| MC18N-K-10230AC | 12.5kVar Cap. Sw. Contactor 3P, 1N/O Aux. 230VAC coil |
| MC32-K-00110 | 25kVar Cap. Sw. Contactor, 3P, 110VAC coil |
| MC32-K-00230 | 25kVar Cap. Sw. Contactor, 3P, 230VAC coil |
| MC32-K-00400 | 25kVar Cap. Sw. Contactor, 3P, 400VAC coil |
| MC50-K-00400 | 33.3kVar Cap. Sw. Contactor, 3P, 400VAC coil |
| MC62-K-00110 | 50kVar Cap. Sw. Contactor, 3P, 110VAC coil |
| MC62-K-00230 | 50kVar Cap. Sw. Contactor, 3P, 230VAC coil |
| MC62-K-00400 | 50kVar Cap. Sw. Contactor, 3P, 400VAC coil |
| MC74-K-00230 | 75kVar Cap. Sw. Contactor, 3P, 230VAC coil |
| MC74-K-00400 | 75kVar Cap. Sw. Contactor, 3P, 400VAC coil |
| MC115-K-00230 | 100kVar Cap. Sw. Contactor, 3P, 230VAC coil |
| MC115-K-00400 | 100kVar Cap. Sw. Contactor, 3P, 400VAC coil |

DC Operated Contactor low power consumption 3W inrush-sealed

| Part Number | Description |
|---------------|---|
| MCD10-S-10=24 | Contactor 4kW 10A 3P, 1 N/O Aux. 24VDC coil |
| MCD14-S-10=24 | Contactor 5.5kW 14A 3P, 1 N/O Aux. 24VDC coil |
| MCD18-S-10=24 | Contactor 7.5kW 18A 3P, 1 N/O Aux. 24VDC coil |
| MCD22-S-10=24 | Contactor 11kW 22A 3P, 1 N/O Aux. 24VDC coil |
| MCD32-S-00=24 | Contactor 15kW 32A 3P, 24VDC coil |
| MCD40-S-00=24 | Contactor 18.5kW 40A 3P, 24VDC coil |

Accessories

| Part Number | Description |
|-------------|--|
| MBA-11 | 1N/O + 1N/C for MB09-MB12 contactors - top mount |
| MBA-22 | 2N/O + 2N/C for MB09-MB12 contactors - top mount |
| MCA01 | 1N/C Contact, For MC10 to MC115 Contactors, Top Mount |
| MCA10 | 1N/O Contact, For MC10 to MC115 Contactors, Top Mount |
| MCAH01 | High Switching Capacity 25A AC1, 1N/C Contact, Top Mount |
| MCAH10 | High Switching Capacity 25A AC1, 1N/O Contact, Top Mount |
| MCAS-11 | 1N/O + 1N/C, For MC24 to MC115 Contactors, Side Mount |
| MCAT11 | 1N/O + 1N/C, For MC151 to MC316 Contactors, Top Mount |
| MC-I-W | Interlock for MC(D)10 to MC(D)40 Contactors |
| MC-I-X | Interlock for MC50 to MC74 Contactors |
| MC-I-Y | Interlock for MC90 to MC115 Contactors |

Thermal Overload Relays

| Part Number | Description |
|---------------|---|
| U12/16E0.9-MC | Manual reset Overload 0.6-0.9A, MC10N-MC22N |
| U12/16E1.2-MC | Manual reset Overload 0.8-1.2A, MC10N-MC22N |
| U12/16E1.8-MC | Manual reset Overload 1.2-1.8A, MC10N-MC22N |
| U12/16E2.7-MC | Manual reset Overload 1.8-2.7A, MC10N-MC22N |
| U12/16E4-MC | Manual reset Overload 2.7-4A, MC10N-MC22N |
| U12/16E6-MC | Manual reset Overload 4-6A, MC10N-MC22N |
| U12/16E9-MC | Manual reset Overload 6-9A, MC10N-MC22N |
| U12/16E11-MC | Manual reset Overload 8-11A, MC10N-MC22N |
| U12/16E14-MC | Manual reset Overload 10-14A, MC10N-MC22N |
| U12/16E18-MC | Manual reset Overload 13-18A, MC10N-MC22N |
| U12/16E23-MC | Manual reset Overload 17-23A, MC10N-MC22N |
| U12/16E30-MC | Manual reset Overload 22-30A, MC10N-MC22N |
| MCOR-1-0.18 | Man./Auto reset Overload 0.12-0.18A, MC10N-MC32 |
| MCOR-1-0.27 | Man./Auto reset Overload 0.18-0.27A, MC10N-MC32 |
| MCOR-1-0.4 | Man./Auto reset Overload 0.27-0.4A, MC10N-MC32 |
| MCOR-1-0.6 | Man./Auto reset Overload 0.4-0.6A, MC10N-MC32 |
| MCOR-1-0.9 | Man./Auto reset Overload 0.6-0.9A, MC10N-MC32 |
| MCOR-1-1.2 | Man./Auto reset Overload 0.8-1.2A, MC10N-MC32 |
| MCOR-1-1.8 | Man./Auto reset Overload 1.2-1.8A, MC10N-MC32 |
| MCOR-1-2.7 | Man./Auto reset Overload 1.8-2.7A, MC10N-MC32 |
| MCOR-1-4 | Man./Auto reset Overload 2.7-4A, MC10N-MC32 |
| MCOR-1-6 | Man./Auto reset Overload 4-6A, MC10N-MC32 |
| MCOR-1-9 | Man./Auto reset Overload 6-9A, MC10N-MC32 |
| MCOR-1-11 | Man./Auto reset Overload 8-11A, MC10N-MC32 |
| MCOR-1-14 | Man./Auto reset Overload 10-14A, MC10N-MC32 |
| MCOR-1-18 | Man./Auto reset Overload 13-18A, MC10N-MC32 |
| MCOR-1-24 | Man./Auto reset Overload 17-24A, MC10N-MC32 |
| MCOR-1-32 | Man./Auto reset Overload 23-32A, MC10N-MC32 |
| MCOR-2-14 | Manual reset Overload 10-14A, MC24-MC40 |
| MCOR-2-20 | Manual reset Overload 14-20A, MC24-MC40 |
| MCOR-2-28 | Manual reset Overload 20-28A, MC24-MC40 |
| MCOR-2-42 | Manual reset Overload 28-42A, MC24-MC40 |



AC Isolators



IMO offers a comprehensive range of high-quality AC Isolators with switching capabilities ranging from 20A to 125A, both in 3 and 4 Poles. Within the range, there are a number of different mounting types including Panel Mount, DIN Rail Mount and Enclosed, plus there are a range of handles and extendable shafts to suit most applications, as well as other accessories to compliment the range.



Enclosed - PE Series

- 3 to 8 Pole
- On-Load 20Amps to 125Amps
- Interlocked Enclosure Lid
- Padlocking Positions
- IP65 Enclosed Type
- Side Mounted Auxiliary Contacts
1 N/O + 1 N/C

| Part Number | Description |
|-------------|-----------------|
| PE69-3020 | 3 Pole 20 Amps |
| PE69-3025 | 3 Pole 25 Amps |
| PE69-3032 | 3 Pole 32 Amps |
| PE69-3040 | 3 Pole 40 Amps |
| PE69-3063 | 3 Pole 63 Amps |
| PE69-3080 | 3 Pole 80 Amps |
| PE69-4020 | 4 Pole 20 Amps |
| PE69-4025 | 4 Pole 25 Amps |
| PE69-4032 | 4 Pole 32 Amps |
| PE69-4040 | 4 Pole 40 Amps |
| PE69-4063 | 4 Pole 63 Amps |
| PE69-4080 | 4 Pole 80 Amps |
| PE69-6020 | 6 Pole 20 Amps |
| PE69-6025 | 6 Pole 25 Amps |
| PE69-6032 | 6 Pole 32 Amps |
| PE69-6040 | 6 Pole 40 Amps |
| PE69-6063 | 6 Pole 63 Amps |
| PE69-8020 | 8 Pole 20 Amps |
| PE69-8025 | 8 Pole 25 Amps |
| PE69-8032 | 8 Pole 32 Amps |
| PE69-8040 | 8 Pole 40 Amps |
| PE69-8063 | 8 Pole 63 Amps |
| PE69-8080 | 8 Pole 80 Amps |
| PE69-30100 | 3 Pole 100 Amps |
| PE69-30125 | 3 Pole 125 Amps |
| PE69-40100 | 4 Pole 100 Amps |
| PE69-40125 | 4 Pole 125 Amps |

Base Mount - LB Series & Front Panel Mount - PM Series

- 3 & 4 pole
- On-Load 20Amps to 80Amps
- Door Interlocked Handles:
 - ➔ Red/Yellow & Black, 64 x 64mm, 48 x 48mm
 - ➔ 1 Padlocking Position on 48 x 48mm Version
 - ➔ 3 Padlocking Positions on 64 x 64mm Version

| Part Number | Description |
|-------------|----------------|
| LB69-3020 | 3 Pole 20 Amps |
| LB69-3025 | 3 Pole 25 Amps |
| LB69-3032 | 3 Pole 32 Amps |
| LB69-3040 | 3 Pole 40 Amps |
| LB69-3063 | 3 Pole 63 Amps |
| LB69-3080 | 3 Pole 80 Amps |
| LB69-4020 | 4 Pole 20 Amps |
| LB69-4025 | 4 Pole 25 Amps |
| LB69-4032 | 4 Pole 32 Amps |
| LB69-4040 | 4 Pole 40 Amps |
| LB69-4063 | 4 Pole 63 Amps |
| LB69-4080 | 4 Pole 80 Amps |

| Part Number | Description |
|----------------|----------------------------------|
| PM69-3020-B64 | 3P 20A Black Handle 64x64mm |
| PM69-3020-RY48 | 3P 20A Red/Yellow Handle 48x48mm |
| PM69-3020-RY64 | 3P 20A Red/Yellow Handle 64x64mm |
| PM69-3025-RY64 | 3P 25A Red/Yellow Handle 64x64mm |
| PM69-3032-RY64 | 3P 32A Red/Yellow Handle 64x64mm |
| PM69-3040-RY64 | 3P 40A Red/Yellow Handle 64x64mm |
| PM69-3063-RY64 | 3P 63A Red/Yellow Handle 64x64mm |
| PM69-3080-RY64 | 3P 80A Red/Yellow Handle 64x64mm |
| PM69-4020-RY64 | 4P 20A Red/Yellow Handle 64x64mm |
| PM69-4032-RY48 | 4P 32A Red/Yellow Handle 48x48mm |
| PM69-4040-RY64 | 4P 40A Red/Yellow Handle 64x64mm |
| PM69-4063-RY64 | 4P 63A Red/Yellow Handle 64x64mm |

Direct Handle Base Mounted - DM Series

- 3 to 8 Pole
- On-Load 20Amps to 80Amps
- 1 Padlocking Position
- 48x48 Handle Black or Red/Yellow
- To Suit Distribution Boxes

| Part Number | Description |
|----------------|----------------------------------|
| DM69-3020-RY48 | 3 Pole 20 Amps Red/Yellow Handle |
| DM69-3032-RY48 | 3 Pole 32 Amps Red/Yellow Handle |
| DM69-3063-RY48 | 3 Pole 63 Amps Red/Yellow Handle |
| DM69-4032-RY48 | 4 Pole 32 Amps Red/Yellow Handle |
| DM69-4063-RY48 | 4 Pole 63 Amps Red/Yellow Handle |
| DM69-8032-RY48 | 8 Pole 32 Amps Red/Yellow Handle |

PE & LB Series Accessories

| Part Number | Description |
|-------------|--------------------------------------|
| H69-0001 | Red/Yellow handle 64 x 64mm |
| H69-0001-B | Black handle 64 x 64mm |
| H69-0003 | Red/Yellow handle 48 x 48mm |
| H69-0004 | Black handle 48 x 48mm |
| J7049 | Door handle mounting tool |
| E69-0001 | Extension shaft – 100mm |
| E69-0002 | Extension shaft – 200mm |
| E69-0003 | Extension shaft – 300mm |
| E69-0004 | Extension shaft – 400mm |
| A69-0001 | Auxiliary contacts 1 N/O + 1 N/C |
| A69-0002 | Auxiliary contacts 2 N/O |
| SN69-0001 | Solid neutral block |
| SP69-0001 | Add on neutral switching pole 20-40A |



DC Isolators



Solar Isolators “SI..” are switchgears for interrupting the DC/AC-Inverter from the solar-panels. Photovoltaic installations have to be equipped with DC-isolators in accordance to IEC 60364-7-712.

- TRUE DC Isolator to UL508i
- Available in 2,4,6,8 Pole Versions
- Max. Rated Current 58A @ 1000VDC (Acc. To DC21B for SI32)
- Max. Rated Current 80A @ 600VDC (Acc. To DC21B for SI55)
- High Reliability Self-Cleaning & Vibration Resistant Knife Contacts
- Arc Suppression Chamber
- Operator Independent High Speed Switching (Typically 3ms)
- Additional Security with Patented “Safelock” Function
- Compact & Space Saving Design
- Maximum Operator Torque of 1Nm for Easy Operation (SI16-32)
- Poles can be Wired in Series to Increase Rating (DC21B & DC22B)
- Large Box Terminals with up to 25mm² Cross Sectional Wiring Area
- Different Mounting Versions Available (DIN / Base / Panel)
- Solar Connectors are Available (Plug / Socket / Branch)

| Part Number | Description | Rating |
|----------------|---|---------------|
| SI16-PEL64R-2 | Enclosed IP66 2 pole - 1 String | 16A @ 800VDC |
| SI16-PEL64R-4 | Enclosed IP66 4 pole - 2 Strings | 16A @ 800VDC |
| SI16-PEL64R-4S | Enclosed IP66 4 pole linked - 1 String | 16A @ 1500VDC |
| SI25-PEL64R-2 | Enclosed IP66 2 pole - 1 String | 25A @ 600VDC |
| SI25-PEL64R-4 | Enclosed IP66 4 pole - 2 Strings | 25A @ 600VDC |
| SI25-PEL64R-4S | Enclosed IP66 4 pole linked - 1 String | 25A @ 1200VDC |
| SI32-PEL64R-2 | Enclosed IP66 2 pole - 1 String | 32A @ 600VDC |
| SI32-PEL64R-4 | Enclosed IP66 4 pole - 2 Strings | 32A @ 600VDC |
| SI32-PEL64R-4S | Enclosed IP66 4 pole linked - 1 String | 32A @ 1200VDC |
| SI40-PEL64R-4 | Enclosed IP66 4 pole - 2 Strings | 40A @ 600VDC |
| SI55-PEL64R-4 | Enclosed IP66 4 pole - 2 Strings | 55A @ 600VDC |
| SI25-PM64-4 | Panel Mount Lever Handle 64mm 4 pole - 2 Strings | 25A @ 600VDC |
| SI32-PM64-4 | Panel Mount Lever Handle 64mm 4 pole - 2 Strings | 32A @ 600VDC |
| SI16-PM64R-2 | Panel Mount Rotary Handle 64mm 2 pole - 1 String | 16A @ 800VDC |
| SI25-PM64R-4 | Panel Mount Rotary Handle 64mm 4 pole - 2 Strings | 25A @ 600VDC |
| SI40-PM64R-4 | Panel Mount Rotary Handle 64mm 4 pole - 2 Strings | 40A @ 600VDC |
| SI55-PM64R-4 | Panel Mount Rotary Handle 64mm 4 pole - 2 Strings | 55A @ 600VDC |
| SI16-BMDC64-2 | Base Mount Door Interlock Lever Handle 64mm 2 pole - 1 String | 16A @ 800VDC |
| SI16-BMDC64R-2 | Base Mount Door Interlock Rotary Handle 64mm 2 pole - 1 String | 16A @ 800VDC |
| SI25-BMDC64R-2 | Base Mount Door Interlock Rotary Handle 64mm 2 pole - 1 String | 25A @ 600VDC |
| SI40-BMDC64R-4 | Base Mount Door Interlock Rotary Handle 64mm 4 pole - 2 Strings | 40A @ 600VDC |
| SI55-BMDC64R-4 | Base Mount Door Interlock Rotary Handle 64mm 4 pole - 2 Strings | 55A @ 600VDC |
| SI16-DB-4 | Distribution Board Mount 4 pole - 2 Strings | 16A @ 800VDC |
| SI25-DB-2 | Distribution Board Mount 2 pole - 1 String | 25A @ 600VDC |
| SI16-DBL-4 | Distribution Board Mount Lockable 4 pole - 2 Strings | 16A @ 800VDC |
| SI16-DBL-8 | Distribution Board Mount Lockable 8 pole - 4 Strings | 16A @ 800VDC |
| SI32-DBL-4 | Distribution Board Mount Lockable 4 pole - 2 Strings | 32A @ 600VDC |
| SI25-SHM-2 | Single Hole Mounting 2 pole - 1 String | 25A @ 600VDC |
| SI25-SHM-4 | Single Hole Mounting 4 pole - 2 Strings | 25A @ 600VDC |



Motor Protection Circuit Breakers C4



IMO C4 Motor Protection Circuit Breakers are designed to be a compact reliable unit that offers high protection for 3 phase induction motors but can also be used as a motor starter, and for line protection. Integrating the functions of a circuit breaker and thermal overload relay in single unit so they significantly reduce the space requirements and wiring necessary for an installation that would have traditionally used a three component starter assembly.

With ratings from 0.16A to 100A in 3 frame sizes the IMO C4 has a short circuit breaking capacity of 100kA (Icu) and incorporates both thermal overload functionality and phase failure protection for phase-to-phase faults thereby offering comprehensive protection of the motor and controlling electrical circuitry.

The C4 is available with either rocker or rotary control and is complemented with a wide range of accessories that enable it to be connected to supplementary products, such as an IMO contactor, to give greater versatility. The design flexibility of the C4 ensures its convenience for installers, with the availability of auxiliary contacts that can be front or side mounted, to busbar systems available for the interconnection of up to 5 units; the C4 can be wired from either the top or bottom supply terminals without any reduction in ratings.

DIN rail and panel mount models are designed in accordance with IEC 60947-1, IEC 60947-2, IEC 60947-4-1, VDE 660 and UL approved (E223201) ensure that the IMO C4 circuit breakers are ideal for installation and OEM applications.



- Motor protection rating up to 100 Amps
- Short circuit breaking capacity up to 100kA
- Phase failure protection
- DIN rail mounting
- Wide range of accessories

| Part Number | Description |
|-------------|--|
| C4/32R-0,63 | 0.4 - 0.63A Instantaneous Release 8,2A |
| C4/32R-1 | 0.63 - 1.0A Instantaneous Release 13A |
| C4/32R-1,6 | 1.0 - 1.6A Instantaneous Release 20,8A |
| C4/32R-2,5 | 1.6 - 2.5A Instantaneous Release 32,5A |
| C4/32R-4 | 2.5 - 4A Instantaneous Release 52A |
| C4/32R-6 | 4 - 6A Instantaneous Release 78A |
| C4/32R-8 | 5 - 8A Instantaneous Release 104A |
| C4/32R-10 | 6 - 10A Instantaneous Release 130A |
| C4/32R-13 | 9 - 13A Instantaneous Release 169A |
| C4/32R-17 | 11 - 17A Instantaneous Release 221A |
| C4/32R-22 | 14 - 22A Instantaneous Release 286A |
| C4/32T-1,6 | 1.0 - 1.6A Instantaneous Release 20,8A |
| C4/32T-4 | 2.5 - 4A Instantaneous Release 52A |
| C4/32T-6 | 4 - 6A Instantaneous Release 78A |
| C4/32T-8 | 5 - 8A Instantaneous Release 104A |
| C4/32T-13 | 9 - 13A Instantaneous Release 169A |
| C432VK1 | Link Module for the C4/32... MCB's to MB Contactors |
| C432VK3 | Link Module for the C4/32... MCB's to MC10N & MC22N Contactors |
| C4HQ11 | Auxiliary Contact Block Top Mount, 1N/O + 1N/C |
| C4HS11 | Auxiliary Contact Block Side Mount, 1N/O + 1N/C |

This is just a selection from our range.
For the entire range, please go to
www.imopc.com

| C4/32T | C4/32R | C4/63R | C4/100R |
|--------|--------|--------|---------|
| | | | |

Miniature Circuit Breakers B10



The IMO range of Miniature Circuit Breakers has been designed for protection of electrical installations against overload and short circuits and is manufactured in accordance with EN60898.

Ordering Code & Examples

| | | | | | | | |
|--------------------------|------------|----------|--|-----------|-----------------------|--|--|
| B10 | | C | | 10 | | 04A <i>Rated Current Amps (A)</i> | |
| MCB 4.5kA | B4 | | | 10 | Single Pole | | |
| MCB 6kA | B6 | | | 1N | Single Pole + Neutral | | |
| MCB 10kA | B10 | | | 20 | Two Pole | | |
| | | | | 30 | Three Pole | | |
| | | | | 3N | Three Pole + Neutral | | |
| Operating Characteristic | B | | | | | | |
| Operating Characteristic | C | | | | | | |
| Operating Characteristic | D | | | | | | |

Current ratings (A): 2/4/6/10/16/20/25/32/40/50/63
 B6 range standard supply in B curve
 B4 range only available in 1P+N



Isolating Switch

| Part Number | Description |
|-------------|------------------------|
| BIS1063A | 1 Pole 63A 230/400VAC |
| BIS2063A | 2 Pole 63A 230/400VAC |
| BIS2100C | 2 Pole 100A 230/400VAC |
| BIS2125A | 2 Pole 125A 230/400VAC |
| BIS3063A | 3 Pole 63A 230/400VAC |
| BIS4063A | 4 Pole 63A 230/400VAC |
| BIS4125A | 4 Pole 125A 230/400VAC |

Miniature Circuit Breakers

| Part Number | Description |
|-------------|--|
| B4C1N10A | MCB 4.5kA C Curve 1 Pole + Neutral 10A |
| B6B1010A | MCB 6kA B Curve 1 Pole 10A |
| B10C1002A | MCB 10kA C Curve 1 Pole 2A |
| B10C1006A | MCB 10kA C Curve 1 Pole 6A |
| B10C2010A | MCB 10kA C Curve 2 Pole 10A |
| B10D1002A | MCB 10kA D Curve 1 Pole 2A |
| B10D3010A | MCB 10kA D Curve 3 Pole 10A |

Residual Circuit Breaker with Overload (RCBO A Type)

| Part Number | Description |
|---------------|------------------------------------|
| B6CR1N06-30-A | RCBO 6kA 30mA 1 Pole + Neutral 6A |
| B6CR1N10-30-A | RCBO 6kA 30mA 1 Pole + Neutral 10A |
| B6CR1N16-30-A | RCBO 6kA 30mA 1 Pole + Neutral 16A |
| B6CR1N20-30-A | RCBO 6kA 30mA 1 Pole + Neutral 20A |
| B6CR1N25-30-A | RCBO 6kA 30mA 1 Pole + Neutral 25A |
| B6CR1N32-30-A | RCBO 6kA 30mA 1 Pole + Neutral 32A |

Residual Current Circuit Breaker (RCCB AC Type)

| Part Number | Description |
|-------------|-------------------------------------|
| B10R2025-30 | RCCB 10kA 30mA 1 Pole + Neutral 25A |
| B10R2032-30 | RCCB 10kA 30mA 1 Pole + Neutral 32A |
| B10R2040-30 | RCCB 10kA 30mA 1 Pole + Neutral 40A |
| B10R2063-30 | RCCB 10kA 30mA 1 Pole + Neutral 63A |
| B10R4025-30 | RCCB 10kA 30mA 3 Pole + Neutral 25A |
| B10R4032-30 | RCCB 10kA 30mA 3 Pole + Neutral 32A |
| B10R4040-30 | RCCB 10kA 30mA 3 Pole + Neutral 40A |
| B10R4063-30 | RCCB 10kA 30mA 3 Pole + Neutral 63A |

Accessories

| Part Number | Description |
|---------------|---|
| B10-F3 | Auxiliary contact side mounting 1C/O 6A |
| B10-S3 | Shunt trip side mounting 230VAC |
| B10-LOCK | Lever locking device (padlock not included) |
| B10BB1P100-1M | Busbar Pin type 1P 1m |
| B10BB1F100-1M | Busbar Fork type 1P 1m |
| B10BB3P100-1M | Busbar Pin type 3P 1m |
| B10BB3F100-1M | Busbar Fork type 3P 1m |
| B10BBCAP1 | End cap for 1P busbar |
| B10BBCAP3 | End cap for 3P busbar |



DIN Rail Terminals

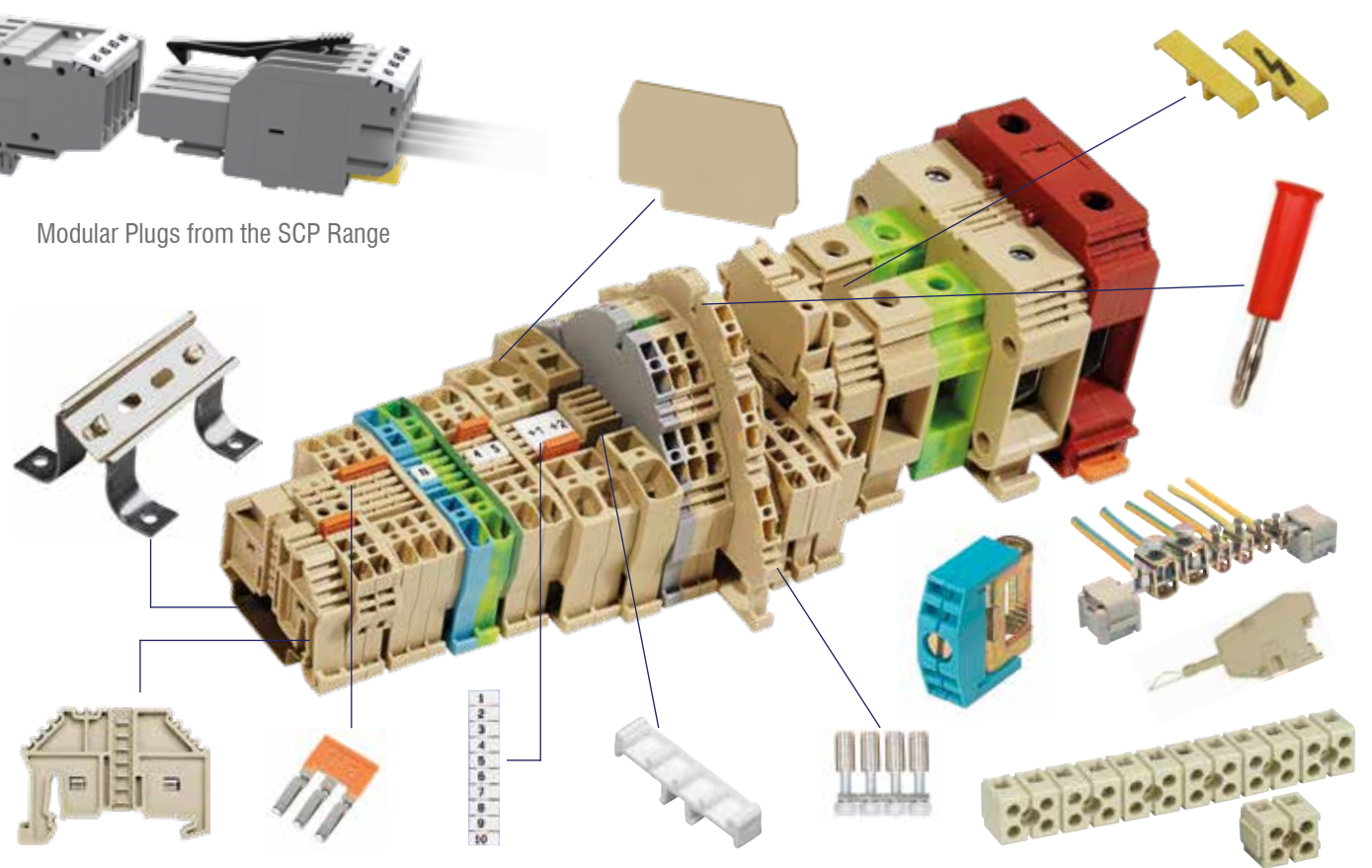


IMO's range of DIN Rail Terminals offers the customer a host of features at unbeatable prices. With high quality throughout the IMO range includes standard modular feed-through terminals, double and triple level terminals, fused terminals, disconnects and three-level sensor terminals just to highlight a few.

IMO DIN Rail Terminals can be offered with screw clamp, push-fit or our latest innovation - Spring Clamp Pluggable connections and although offered in beige as standard, the range is available in multiple colours throughout, allowing OEMs and installers to use colour code systems within their panels.

In line with the constant drive towards greater packing density of all components within the control panel, IMO has made its DIN Rail Terminals both lighter and more compact whilst their strength is ensured by using self-extinguishing unbreakable polyamide 6.6. IMO DIN Rail Terminals are offered in sizes from 2.5mm² through to 240mm² and have bevelled cable entry to simplify the introduction of the conductors.

Our terminals are designed to meet both national and international standards, and have gained approvals from organisations such as UL, CSA, DNV, VDE; and a number of products are also certified to IECEx.



| Screw Clamp ER Series | Screw Clamp Earth ERPE Series | Spring Clamp Pluggable SCP Series | SCP Plugs SCP-PT Series | Push Fit PF Series | Push Fit Earth PFPE Series |
|--------------------------|----------------------------------|--------------------------------------|----------------------------|-----------------------|-------------------------------|
| | | | | | |

Screw Clamp Terminals

| Part Number | Description |
|-------------|---|
| ER2.5BEIGE | 2.5mm Beige Terminal |
| ER2.5PBEIGE | 2.5mm Beige Terminal (35mm/32mm DIN Rail version) |
| ER4BEIGE | 4mm Beige Terminal |
| ER4PBEIGE | 4mm Beige Terminal (35mm/32mm DIN Rail version) |
| ER6BEIGE | 6mm Beige Terminal |
| ER10BEIGE | 10mm Beige Terminal |
| ER16BEIGE | 16mm Beige Terminal |
| ER35PBEIGE | 35mm Beige Terminal (35mm/32mm DIN Rail version) |
| ER70BEIGE | 70mm High Current Terminal |
| ER95BEIGE | 95mm High Current Terminal |
| ERPE2.5/4 | 2.5 to 4mm Earth Terminal |
| ERPE2.5P | 2.5mm Earth Terminal (35mm/32mm DIN Rail version) |
| ERPE6/10 | 6 to 10mm Earth Terminal |
| ERPE16P | 16mm Earth Terminal (35mm/32mm DIN Rail version) |
| ERPE35P | 35mm Earth Terminal (35mm/32mm DIN Rail version) |
| ERB95 | 95mm Bolt Connection High Current Terminal |
| ERB150 | 150mm Bolt Connection High Current Terminal |
| ERD2.5BEIGE | 2.5mm Double Deck Terminal |
| ERD4BEIGE | 4mm Double Deck Terminal |
| ERT3BEIGE | 2.5mm Triple Deck Terminal |
| ERTD4 | 4mm Disconnect Terminal |
| ERF2BEIGE | 6mm Pull-Out Fuse Module Terminal |
| ERF3BEIGE | 4mm Pull-Out Fuse Module Terminal |
| ERWT2NBEIGE | 10mm Test/Disconnect Terminal |
| ERDT10/16 | 10/16mm Distribution Terminal |

Push Fit Terminals

| Part Number | Description |
|-------------|---|
| PF1.5BEIGE | 1.5mm Beige Terminal |
| PF2.5BEIGE | 2.5mm Beige Terminal |
| PF4BEIGE | 4mm Beige Terminal |
| PF6BEIGE | 6mm Beige Terminal |
| PF10BEIGE | 10mm Beige Terminal |
| PFPE2.5P | 2.5mm Earth Terminal (35mm/32mm DIN Rail version) |
| PFPE4P | 4mm Earth Terminal (35mm/32mm DIN Rail version) |
| PFPE6P | 6mm Earth Terminal (35mm/32mm DIN Rail version) |
| PFPE10P | 10mm Earth Terminal (35mm/32mm DIN Rail version) |
| PFD2.5BEIGE | 2.5mm Double Deck Beige Terminal |
| PFD4BEIGE | 4mm Double Deck Beige Terminal |
| PFT3BEIGE | 2.5mm Triple Deck Beige Terminal |
| PFTD2.5 | 2.5mm Disconnect Terminal |
| PFF3BEIGE | 2.5mm Fuse Beige Terminal |
| PFD2.5E | 1 In / 2 Out 2.5mm Feedthrough Terminal |
| PFD4E | 1 In / 2 Out 4mm Feedthrough Terminal |
| PFD2.5C | 2 In / 2 Out 2.5mm Feedthrough Terminal |
| PFD2.5PE | 1 In / 2 Out 2.5mm Earth Terminal |
| PFD2.5CPE | 2 In / 2 Out 2.5mm Earth Terminal |
| PFD3S | 2.5mm Triple Decker Sensor Terminal |

IMO Push Fit Terminals can save you up to 75% on wiring time compared to screw clamp connection terminals

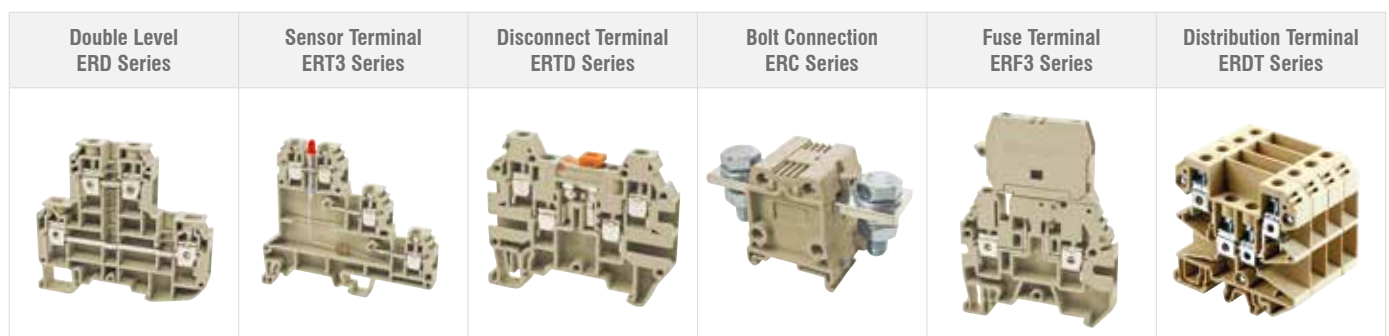
Spring Clamp Pluggable Terminals

| Part Number | Description |
|----------------|---|
| SCP2.5GREY | 2.5mm Terminal Wire to Plug |
| SCPPP2.5GREY | 2.5mm Terminal Plug to Plug |
| SCP212.5GREY | 2.5mm Terminal Double Wire Entry to Plug |
| SCP22K2.5GREY | 2.5mm Knife Disconnect Terminal Double Wire Entry to Plug |
| SCP222.5GREY | 2.5mm Terminal Double Wire Entry to Two Plugs |
| SCP22D2.5GREY | 2.5mm Two-Level Terminal Double Wire Entry to Two Plugs |
| SCP22DB2.5GREY | 2.5mm Two-Level Terminal Double Wire Entry to Two Plugs (Bridged) |
| SCPPE2.5P | 2.5mm Earth Terminal Wire to Plug |
| SCPPPE2.5P | 2.5mm Earth Terminal Plug to Plug |
| SCP21PE2.5P | 2.5mm Earth Terminal Double Wire Entry to Plug |
| SCP22PE2.5P | 2.5mm Earth Terminal Double Wire Entry to Two Plugs |
| SCP22DBPE2.5P | 2.5mm Two-Level Earth Terminal Double Wire Entry to Two Plugs (Bridged) |
| SCP-H02.5 | 2.5mm Terminal Wire to Plug Horizontal Mount |
| SCP-FM2.5 | 2.5mm Terminal Wire to Plug Connector Mount |
| SCP-HM2.5 | 2.5mm Terminal Wire to Plug Hole Mount |

Spring Clamp Pluggable Plugs

| Part Number | Description |
|-------------|---|
| SCP-PT2.5 | 2.5mm Single Pole Modular Plug |
| SCP-PTCC2.5 | 2.5mm Single Pole Modular Plug Cross Connectable |
| SCP-PTA2.5 | 2.5mm Single Pole Modular Plug 45° Angled |
| SCP-PTD2.5 | 2.5mm Single Pole Modular Plug Double Entry Cross Connectable |

This is just a selection from our range.
For the entire range, please go to
www.imopc.com



Industrial Power Relays & Sockets



IMO's range of Relays include Signal Relays, Power Relays, Automotive Relays and Solar Relays, and range of compatible sockets. IMO's relay manufacturing goes back as far as 1970, and over the years we have strived to innovate and produce new types of relays for developing technologies. In 1984 we developed the first BT Type 47 Telecom Relay, and again in 1990 we launched the first BABT compliant isolation relay for data transfer, confirming our place as one of the leading global relay manufacturers.

As part of our innovative nature we have manufactured a range of Slimline DIN Rail Mount Relays at just 6mm wide, which provide substantial space savings in a panel when compared to traditional plug-in style relays. The range with plug-in relays rated at 6 Amps allows easy maintenance without the need for complete rewiring of the socket. The sockets are available in wide operating voltages for both AC and DC circuits within the same unit, providing greater flexibility for the user and reducing the number of stock items required.



Slimline Plug-In Power Relays

| Part Number | Description |
|------------------|--|
| ETS-1AN-SL-5VDC | Power Relay, 6A, 1N/O, 5VDC, AgNi, Sealed |
| ETS-1AN-SL-6VDC | Power Relay, 6A, 1N/O, 6VDC, AgNi, Sealed |
| ETS-1AN-SL-9VDC | Power Relay, 6A, 1N/O, 9VDC, AgNi, Sealed |
| ETS-1AN-SL-12VDC | Power Relay, 6A, 1N/O, 12VDC, AgNi, Sealed |
| ETS-1AN-SL-24VDC | Power Relay, 6A, 1N/O, 24VDC, AgNi, Sealed |
| ETS-1AN-SL-60VDC | Power Relay, 6A, 1N/O, 60VDC, AgNi, Sealed |
| ETS-1CN-SL-5VDC | Power Relay, 6A, 1C/O, 5VDC, AgNi, Sealed |
| ETS-1CN-SL-6VDC | Power Relay, 6A, 1C/O, 6VDC, AgNi, Sealed |
| ETS-1CN-SL-9VDC | Power Relay, 6A, 1C/O, 9VDC, AgNi, Sealed |
| ETS-1CN-SL-12VDC | Power Relay, 6A, 1C/O, 12VDC, AgNi, Sealed |
| ETS-1CN-SL-24VDC | Power Relay, 6A, 1C/O, 24VDC, AgNi, Sealed |
| ETS-1CN-SL-48VDC | Power Relay, 6A, 1C/O, 48VDC, AgNi, Sealed |
| ETS-1CN-SL-60VDC | Power Relay, 6A, 1C/O, 60VDC, AgNi, Sealed |

Sockets for Slimline Plug-In Power Relays

| Part Number | Description |
|--------------|---|
| SRSI-24AC/DC | DIN Rail Mount Socket for ETS-1AN-SL-24VDC, ETS-1AN-SL-6VDC, ETS-1AN-SL-9VDC, ETS-1CN-SL-12VDC, ETS-1CN-SL-24VDC, ETS-1CN-SL-6VDC, ETS-1CN-SL-9VDC, ETS-1CN1-SL-12VDC, ETS-1CN1-SL-6VDC, ETS-1CN1-SL-9VDC |
| SRSI-24DC | DIN Rail Mount Socket for ETS-1AN-SL-5VDC, ETS-1CN-SL-5VDC, ETS-1CN1-SL-5VDC |
| SRSI-60AC/DC | DIN Rail Mount Socket for ETS-1AN-SL-60VDC, ETS-1CN-SL-48VDC, ETS-1CN-SL-60VDC, ETS-1CN1-SL-48VDC, ETS-1CN1-SL-60VDC |

Miniature Plug-In Power Relays

| Part Number | Description |
|---------------------|---|
| SRRHN-1CN-SL-115VAC | Miniature Power Relay, SPCO, 12A, 115VAC, 0.75VA, AgNi, Sealed |
| SRRHN-1CN-SL-12VDC | Miniature Power Relay, SPCO, 12A, 12VDC, 400mW, AgNi, Sealed |
| SRRHN-1CN-SL-230VAC | Miniature Power Relay, SPCO, 12A, 230VAC, 0.75VA, AgNi, Sealed |
| SRRHN-1CN-SL-24VDC | Miniature Power Relay, SPCO, 12A, 24VDC, 400mW, AgNi, Sealed |
| SRRHN-1CN-SL-5VDC | Miniature Power Relay, SPCO, 12A, 5VDC, 400mW, AgNi, Sealed |
| SRRHN-1CT-SL-12VDC | Miniature Power Relay, SPCO, 12A, 12VDC, 400mW, AgSnO ₂ , Sealed |
| SRRHN-1CT-SL-24VDC | Miniature Power Relay, SPCO, 12A, 24VDC, 400mW, AgSnO ₂ , Sealed |
| SRRHN-2CN-FL-24VDC | Miniature Power Relay, DPCO, 8A, 24VDC, 400mW, AgNi, Flux Proof |
| SRRHN-2CN-SL-115VAC | Miniature Power Relay, DPCO, 8A, 115VAC, 0.75VA, AgNi, Sealed |
| SRRHN-2CN-SL-12VDC | Miniature Power Relay, DPCO, 8A, 12VDC, 400mW, AgNi, Sealed |
| SRRHN-2CT-SL-12VDC | Miniature Power Relay, DPCO, 8A, 12VDC, 400mW, AgSnO ₂ , Sealed |
| SRRHN-2CT-SL-24VDC | Miniature Power Relay, DPCO, 8A, 24VDC, 400mW, AgSnO ₂ , Sealed |
| SRRHN-2CT-SL-5VDC | Miniature Power Relay, DPCO, 8A, 5VDC, 400mW, AgSnO ₂ , Sealed |
| SRP-1A1T-SL-12VDC | Miniature Power Relay, SPNO, 16A, 12VDC, 400mW, AgSnO ₂ , Sealed |
| SRP-1A1T-SL-24VDC | Miniature Power Relay, SPNO, 16A, 24VDC, 400mW, AgSnO ₂ , Sealed |

Sockets for Miniature Plug-In Power Relays

| Part Number | Description |
|-------------|--|
| SRNE3-S | Single Ended Socket for all 1 Pole SRRHN Relays |
| SRNE3-T | Double Ended Socket for all 1 Pole SRRHN Relays |
| SRSE1-0 | PCB Socket for all 1 Pole SRRHN Relays |
| SRNE5-S | Single Ended Socket for all 2 Pole SRRHN Relays & SRP Relays |
| SRNE5-T | Double Ended Socket for all 2 Pole SRRHN Relays & SRP Relays |
| SRSE2-0 | PCB Socket for all 2 Pole SRRHN Relays & SRP Relays |

| ETS | SRRHN/SRP | HYE | QYE | RSE |
|-----|-----------|-----|-----|-----|
| | | | | |

HYE Relays

| Part Number | Description |
|--------------|---|
| HYE21PN12DC | 2C/O, 7A, 12VDC Coil, Plug-in, LED & Manual Test/Latch |
| HYE21PN24AC | 2C/O, 7A, 24VAC Coil, Plug-in, LED & Manual Test/Latch |
| HYE21PN24DC | 2C/O, 7A, 24VDC Coil, Plug-in, LED & Manual Test/Latch |
| HYE21PN120AC | 2C/O, 7A, 120VAC Coil, Plug-in, LED & Manual Test/Latch |
| HYE21PN240AC | 2C/O, 7A, 240VAC Coil, Plug-in, LED & Manual Test/Latch |
| HYE21XX12DC | 2C/O, 7A, 12VDC Coil, Plug-in |
| HYE21XX24AC | 2C/O, 7A, 24VAC Coil, Plug-in |
| HYE21XX24DC | 2C/O, 7A, 24VDC Coil, Plug-in |
| HYE21XX120AC | 2C/O, 7A, 120VAC Coil, Plug-in |
| HYE21XX240AC | 2C/O, 7A, 240VAC Coil, Plug-in |
| HYE31PN24AC | 3C/O, 7A, 24VAC Coil, Plug-in, LED & Manual Test/Latch |
| HYE31PN24DC | 3C/O, 7A, 24VDC Coil, Plug-in, LED & Manual Test/Latch |
| HYE31PN230AC | 3C/O, 7A, 230VAC Coil, Plug-in, LED & Manual Test/Latch |
| HYE41PN12AC | 4C/O, 5A, 12VAC Coil, Plug-in, LED & Manual Test/Latch |
| HYE41PN12DC | 4C/O, 5A, 12VDC Coil, Plug-in, LED & Manual Test/Latch |
| HYE41PN24AC | 4C/O, 5A, 24VAC Coil, Plug-in, LED & Manual Test/Latch |
| HYE41PN24DC | 4C/O, 5A, 24VDC Coil, Plug-in, LED & Manual Test/Latch |
| HYE41PN48AC | 4C/O, 5A, 48VAC Coil, Plug-in, LED & Manual Test/Latch |
| HYE41PN48DC | 4C/O, 5A, 48VDC Coil, Plug-in, LED & Manual Test/Latch |
| HYE41PN120AC | 4C/O, 5A, 120VAC Coil, Plug-in, LED & Manual Test/Latch |
| HYE41PN110DC | 4C/O, 5A, 110VDC Coil, Plug-in, LED & Manual Test/Latch |
| HYE41PN240AC | 4C/O, 5A, 240VAC Coil, Plug-in, LED & Manual Test/Latch |
| HYE41PX12DC | 4C/O, 5A, 12VDC Coil, Plug-in, Manual Test/Latch |
| HYE41PX24DC | 4C/O, 5A, 24VDC Coil, Plug-in, Manual Test/Latch |
| HYE41PX48DC | 4C/O, 5A, 48VDC Coil, Plug-in, Manual Test/Latch |
| HYE41PX120AC | 4C/O, 5A, 120VAC Coil, Plug-in, Manual Test/Latch |
| HYE41PX240AC | 4C/O, 5A, 240VAC Coil, Plug-in, Manual Test/Latch |
| HYE41XX12DC | 4C/O, 5A, 12VDC Coil, Plug-in |
| HYE41XX24AC | 4C/O, 5A, 24VAC Coil, Plug-in |
| HYE41XX48AC | 4C/O, 5A, 48VAC Coil, Plug-in |
| HYE41XX120AC | 4C/O, 5A, 120VAC Coil, Plug-in |
| HYE41XX240AC | 4C/O, 5A, 240VAC Coil, Plug-in |
| HYE42XX12DC | 4C/O, 5A, 12VDC Coil, PCB Mount |
| HYE42XX24AC | 4C/O, 5A, 24VAC Coil, PCB Mount |
| HYE42XX24DC | 4C/O, 5A, 24VDC Coil, PCB Mount |
| HYE42XX120AC | 4C/O, 5A, 120VAC Coil, PCB Mount |
| HYE42XX240AC | 4C/O, 5A, 240VAC Coil, PCB Mount |

DIN Rail Sockets for HYE Relays

| Part Number | Description |
|-------------|---|
| SRNE2-S | Single Ended Socket for all 2 Pole HYE Relays |
| SRNE2-D | Double Ended Socket for all 2 Pole HYE Relays |
| SRNE3-C | Compact Socket for all 3 Pole HYE Relays |
| SRNE3-D | Double Ended Socket for all 3 Pole HYE Relays |
| SRNE4-C | Compact Socket for all 4 Pole HYE Relays |
| SRNE4-S | Single Ended Socket for all 4 Pole HYE Relays |
| SRNE4-D | Double Ended Socket for all 4 Pole HYE Relays |

QYE Relays

| Part Number | Description |
|--------------|--|
| QYE21XN12AC | 2C/O, 10A, 12VAC Coil, LED, Plug-in |
| QYE21XN12DC | 2C/O, 10A, 12VDC Coil, LED, Plug-in |
| QYE21XN24AC | 2C/O, 10A, 24VAC Coil, LED, Plug-in |
| QYE21XN24DC | 2C/O, 10A, 24VDC Coil, LED, Plug-in |
| QYE21XN120AC | 2C/O, 10A, 120VAC Coil, LED, Plug-in |
| QYE21XN230AC | 2C/O, 10A, 230VAC Coil, LED, Plug-in |
| QYE21XX12DC | 2C/O, 10A, 12VDC Coil, Plug-in |
| QYE21XX24AC | 2C/O, 10A, 24VAC Coil, Plug-in |
| QYE21XX24DC | 2C/O, 10A, 24VDC Coil, Plug-in |
| QYE21XX120AC | 2C/O, 10A, 120VAC Coil, Plug-in |
| QYE21XX240AC | 2C/O, 10A, 240VAC Coil, Plug-in |
| QYE21XF12DC | 2C/O, 10A, 12VDC Coil, Plug-in, Flanged |
| QYE21XF240AC | 2C/O, 10A, 240VAC Coil, Plug-in, Flanged |
| QYE22XX12DC | 2C/O, 10A, 12VDC Coil, PCB Mount |
| QYE22XX24DC | 2C/O, 10A, 24VDC Coil, PCB Mount |
| QYE22XX240AC | 2C/O, 10A, 240VAC Coil, PCB Mount |

Sockets for QYE Relays

| Part Number | Description |
|-------------|--|
| SRHE2-C | DIN Rail Mount Socket for all QYE Plug In Relays |
| SRPE2-0 | PCB Mount Socket for all QYE Plug In Relays |

RSE Relays

| Part Number | Description |
|-------------|---|
| RSE2PN12AC | 8 pins, 2C/O, 10A, 12VAC Coil, Plug-in, LED & Manual Test/Latch |
| RSE2PN24AC | 8 pins, 2C/O, 10A, 24VAC Coil, Plug-in, LED & Manual Test/Latch |
| RSE2PN24DC | 8 pins, 2C/O, 10A, 24VDC Coil, Plug-in, LED & Manual Test/Latch |
| RSE2PN48DC | 8 pins, 2C/O, 10A, 48VDC Coil, Plug-in, LED & Manual Test/Latch |
| RSE2PN110AC | 8 pins, 2C/O, 10A, 110VAC Coil, Plug-in, LED & Manual Test/Latch |
| RSE2PN110DC | 8 pins, 2C/O, 10A, 110VDC Coil, Plug-in, LED & Manual Test/Latch |
| RSE2PN230AC | 8 pins, 2C/O, 10A, 230VAC Coil, Plug-in, LED & Manual Test/Latch |
| RSE3PN12DC | 11 pins, 3C/O, 10A, 12VDC Coil, Plug-in, LED & Manual Test/Latch |
| RSE3PN24AC | 11 pins, 3C/O, 10A, 24VAC Coil, Plug-in, LED & Manual Test/Latch |
| RSE3PN24DC | 11 pins, 3C/O, 10A, 24VDC Coil, Plug-in, LED & Manual Test/Latch |
| RSE3PN48DC | 11 pins, 3C/O, 10A, 48VDC Coil, Plug-in, LED & Manual Test/Latch |
| RSE3PN110AC | 11 pins, 3C/O, 10A, 110VAC Coil, Plug-in, LED & Manual Test/Latch |
| RSE3PN110DC | 11 pins, 3C/O, 10A, 110VDC Coil, Plug-in, LED & Manual Test/Latch |
| RSE3PN230AC | 11 pins, 3C/O, 10A, 230VAC Coil, Plug-in, LED & Manual Test/Latch |

DIN Rail Sockets for RSE Relays

| Part Number | Description |
|-------------|---|
| SRRE8 | Standard Socket for all 8 Pin RSE Relays |
| SRRE8-M | Common Wiring Terminal Socket for all 8 Pin RSE Relays |
| SRRE11 | Standard Socket for all 11 Pin RSE Relays |
| SRRE11-M | Common Wiring Terminal Socket for all 11 Pin RSE Relays |



Custom Cable Solutions

- Built to your specific requirements
- Supplied to you under a single part number
- Top quality, competitively priced solutions
- Can accommodate certified wiring or components (eg. UL, TUV etc.)



However simple or complex the cable solution you require, built entirely to your exact specification, prepared the way you want it, IMO is your supplier of choice!

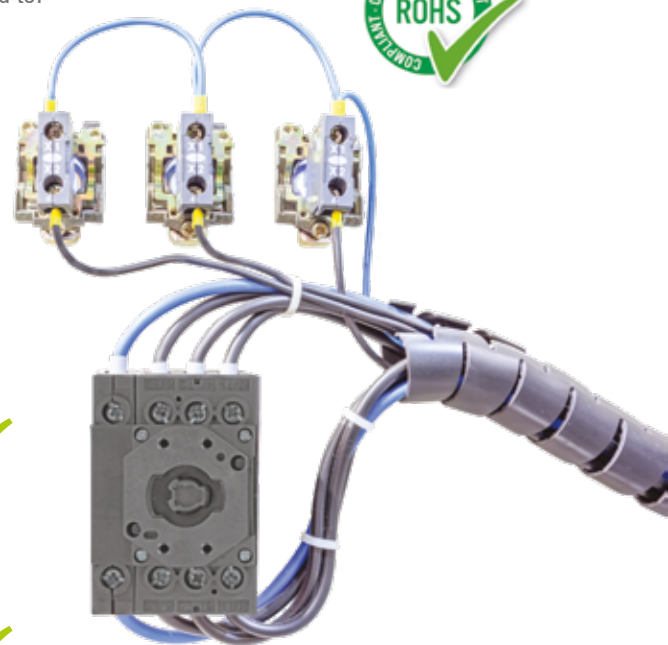
We offer customers prepared cables, cable assemblies and cable looms, with or without crimps, terminations & housings, with no volume too high. We extrude and produce many common types of certified or non-certified equipment cable, in a selection of materials including PVC, Teflon™ and silicone.



Not Just For OEMs...

IMO's bespoke cabling service is not just for OEMs. The cable solutions we manufacture can be used across a multitude of industrial applications, including but not limited to:-

- **Mobility** - Stair Lifts, Patient Handling
- **Security** - Alarm Systems, Fire Systems, Access Systems
- **H.V.A.C.** - Control Panels, Heating Controls, Air Con Equipment
- **Industrial** - PAT Testing, Lift Manufacturing, Boiler Manufacturing
- **Catering** - Food Processing & Packaging, Vending Machines
- **White Goods** - Shower Manufacturing, Refrigeration Manufacturing



No tooling investment ✓

No more crimping and assembling ✓

No more managing inventory of wires and terminations ✓

Huge time and cost savings for you and your company ✓

Whether you need a complex assembly or simple terminated wire, we can work from a drawing, a formal design or a sample to start the process.

Component Solutions for EV Charging

MCBs

Miniature Circuit Breakers protect from over-current and short circuit situations to safeguard assets from risk of damage from overheating and fire.

In accordance with IEC 60898-1.



RCBOs

Residual Current Circuit Breakers with Overcurrent Protection combine the functions of an MCB and RCD to provide all-round protection in a compact package.

In accordance with IEC 60898-1.



RCDs

Residual Current Devices protect personnel from contact with live or damaged wires and components by disconnecting power when an earth leakage current is detected. Standard AC and Type B available.



Branch Isolators

Of modular design, IMO branch isolators are robust and offer power isolation, mounted on a DIN rail.



AC/DC Isolators

IMOs AC & DC Isolators offer robust, lockable power isolation for safe and controlled maintenance and repair activities.

IMO Isolators carry UL safety approvals.



Contactors

IMO's range of Modular Contactors offer control and switching of charging current flow. High reliability for faultless switching.

Full range of accessories and options available including PCB mounting.



Power Supplies

IMO's range of UL approved modular power supplies offer high efficiency, universal input and IMO's 3 year warranty.



For use by EV Installers and EV Charging Manufacturers

As a world leader in the solar industry with many global OEMs using our DC switching and isolation technology, IMO is pleased to introduce its EV Protect range specifically designed to meet the requirements of the Electric Vehicle market.

No matter whether you are an EV Installer looking for a simple one-stop solution for a domestic installation, or an EV Charging Manufacturer looking to source components to make your offering more competitive, IMO has the EV Charging components for you.

A dedicated EV Charging brochure can be found on our website.



IMO Worldwide Offices

IMO Precision Controls Limited

The Interchange
Frobisher Way
Hatfield, Herts AL10 9TG
United Kingdom

Tel: 01707 414 444
Fax: 01707 414 445
Email: imo@imopc.com
Web: www.imopc.com

IMO Jeambrun Automation SAS

5, Rue Alfred De Musset
94100
Saint-Maur-Des-Fosses
France

Tel: 0800 912 712 (n° gratuit)
Fax: 0145 134 737
Email: imo-fr@imopc.com
Web: www.imojeambrun.fr

IMO Automazione

Via Belfiore 10,
50144 Firenze (FI)
Italia

Tel: 800 930 872 (toll free)
Fax: 8000 452 6445
Email: imo-it@imopc.com
Web: www.imopc.it

IMO Canada

1B-701 Rossland Road East
Suite #608
Whitby, Ontario L1N 9K3
Canada

Tel: (+1) 905 799 9237

Email: sales-na@imopc.com
Web: www.imopc.com

IMO Automation LLC

Steeplechase Industrial Park Suite
E, 5845 Steeplechase Blvd
Cumming, GA 30040
USA

Tel: 404 476 8810

Email: sales-na@imopc.com
Web: www.imoautomation.com

IMO South Africa (Pty) Ltd

Unit 12A, Longclaw Drive
Montague Gardens
Cape Town 7441
South Africa

Tel: 021 551 1787
Fax: 021 555 0676

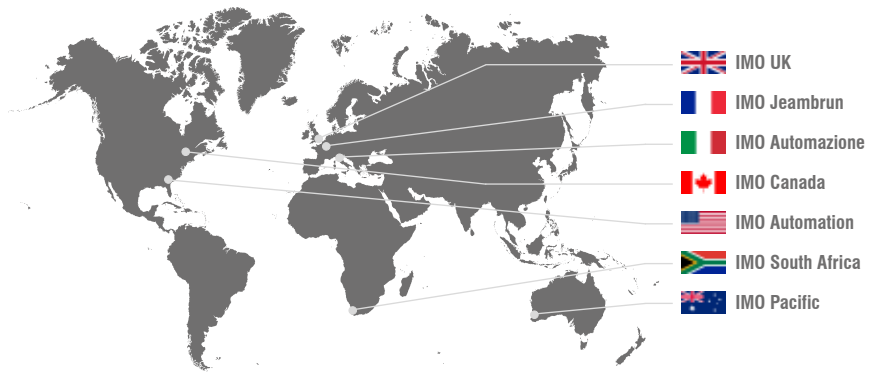
Email: info@imopc.co.za
Web: www.imopc.co.za

IMO Pacific Pty Ltd

Unit 9, Dillington Pass
Landsdale
Perth WA 6065
Australia

Tel: 1300 34 21 31
Fax: 08 9303 9908

Email: sales@imopacific.com.au
Web: www.imopacific.com.au



Connect with and follow IMO Precision Controls Ltd.
for the latest news, views and reviews

